

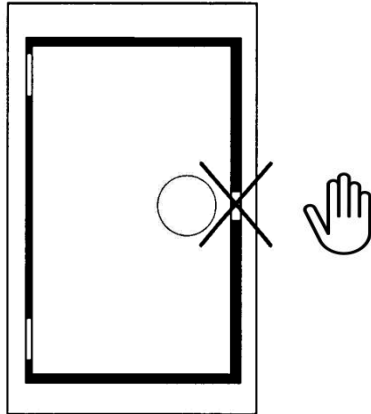


COMBINATION LOCK A199, A141 & A142

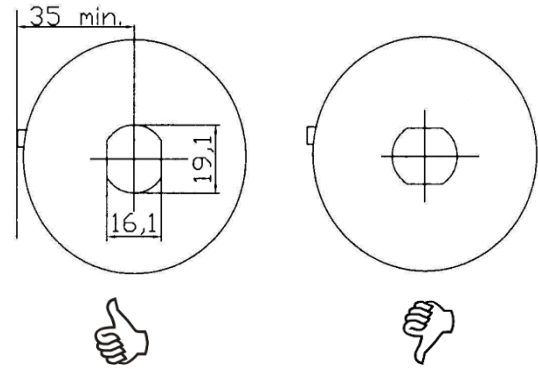


ASSEMBLY INSTRUCTIONS FOR FITTER AND SUPERVISOR

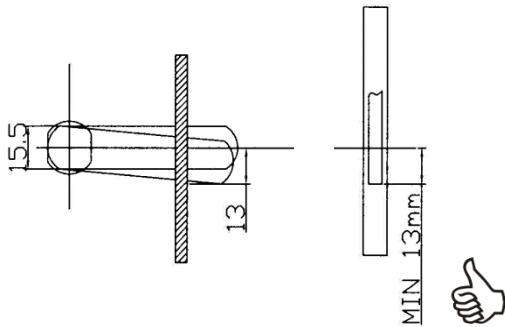
FOR SAFETY REASONS DO NOT USE ON NON-REBATED DOORS!



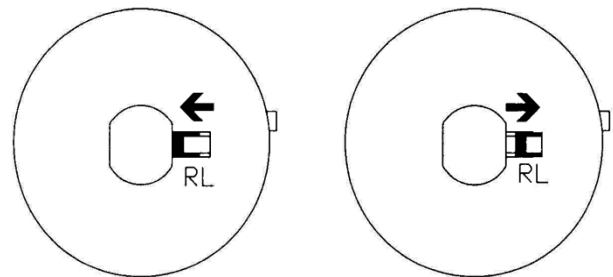
RECOMMENDED PIERCING HOLE SIZE



IF LOCKING INTO A SLOT ALLOW ENOUGH PLAY FOR THE CAM



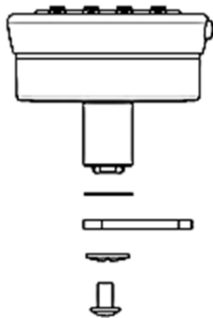
MOVEMENT TO OPEN POSITION OF THE R/L SWITCH



SET SWITCH TO „R“
FOR RIGHT DOOR (DIN R)

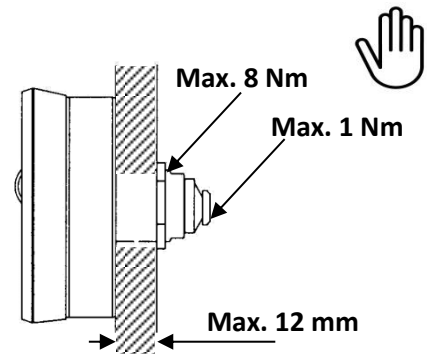
SET SWITCH TO „L“
FOR LEFT DOOR (DIN L)

ORDER OF COMPONENTS FOR CAM FIXING



- 1- WAVY WASHER
- 2- CAM
- 3- TOOTHED WASHER
- 4- TORX SCREW TX20

MAXIMUM PANEL THICKNESS AND TORQUE LIMITS



BA.002_A199.A141&A142_V6

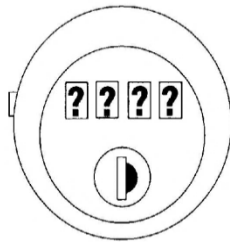


COMBINATION LOCK A199, A141 & A142

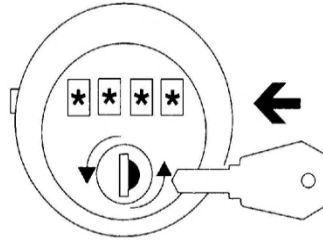


ASSEMBLY INSTRUCTIONS FOR FITTER AND SUPERVISOR

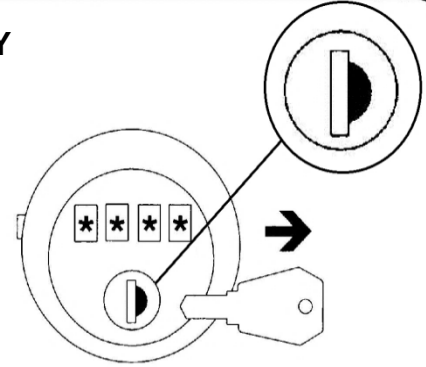
CODE FINDING VIA SERVICE KEY



1- CODE UNKNOWN!
THE LOCK MUST BE HORIZONTAL IN THE INDEX POSITION.



2- INSERT THE SERVICE KEY INTO THE BARREL AND TURN THE KEY ONE FULL TURN (360°) AT LEAST TO THE LEFT. THE SET CODE WILL APPEAR AUTOMATICALLY.



3- WHEN THE LOCK IS TURNED TO THE LATCHING POSITION, MAKE SURE THAT THE DEPRESSION IN THE CAP IS ON THE RIGHT SIDE AS SHOWN.

CAUTION

- THE R/L SWITCH MUST BE SET ONLY IN A HORIZONTAL CLICK POSITION (INDEX POSITION) TO AVOID THE DAMAGE OF THE COMBINATION LOCK.
- COMPONENTS CAN BE DAMAGED IF THE CAM NOT BE HELD IN POSITION WHILE TIGHTENING OR LOOSENING THE FIXING SCREW.
- MAKE SURE THAT THE CAM MOVES FREELY AND IS NOT OBSTRUCTED WHILE OPERATING THE LOCK.
- ANTI-TURN WASHER FOR WOODEN FURNITURE AVAILABLE ON REQUEST.
- NOT SUITABLE FOR 2 AND 3-POINT LOCK SYSTEMS.
- OPERATING TEMPERATURE: 0° ... +50° C (32°... +122° F)



Troubleshooting

Fault	Cause	Corrective measures
Hard lock movement	Cam scrapes on the door frame	Increase play between cam and frame i.e. new cam configuration
Lock cannot be opened with the set code	Mistake made during the code setting process	Carry out code finding process
Lock cannot be opened with the service key	Code wheels do not jump to the set code	Enter the service key, turn 90° and press the code setting button.

BA.002_A199.A141&A142_V6